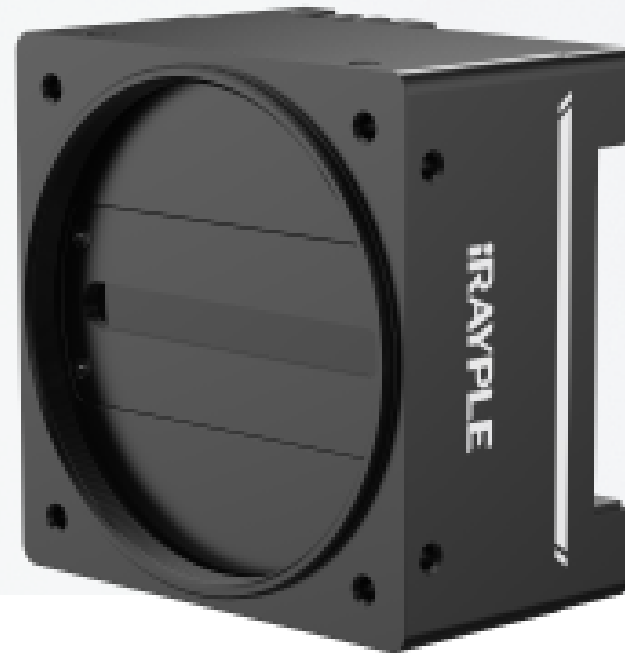


5000 series

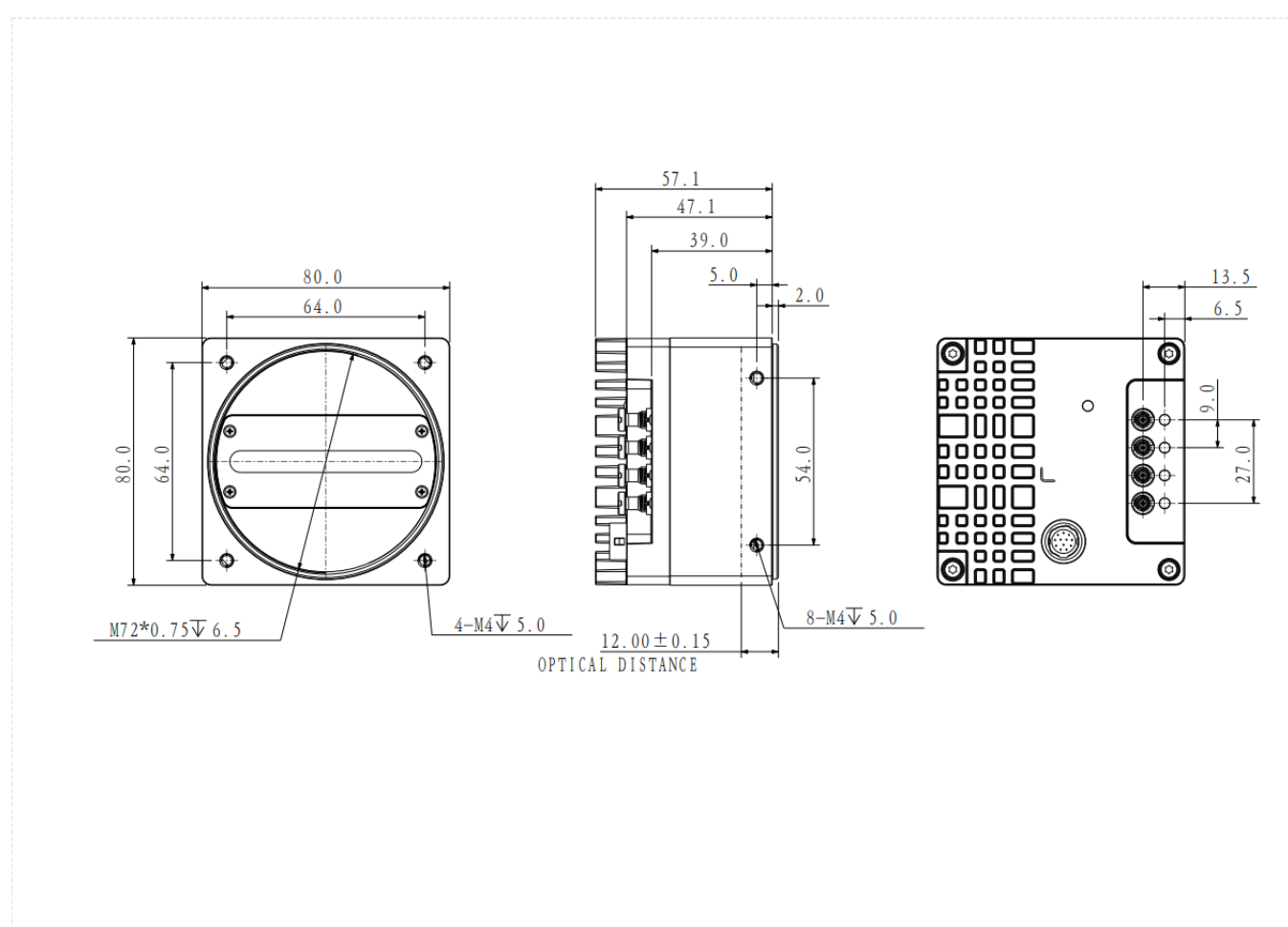
L5087MX470E



Features

- 8K resolution , Maximum 200K line rate , 4 x 6.25Gbps theoretical transfer bandwidth
- High dynamic range, good signal-to-noise ratio, excellent image quality
- Supports multi-ROI FPN correction
- Support ISP functions such as Gamma, LUT, white balance, etc. Support software trigger/capture card trigger/free run multiple trigger modes
- Conforms to CoaXPress protocol and GenICam standard;
- Support PoCXP and DC 24V power supply;

Dimensions (mm)



Specification

Model		L5087MX470E
Basic	Image Sensor	CMOS
	Shutter	Global
	Resolution	8192 × 4
	Line Rate	200K
	Bit Depth	10bit
	Mono/Color	Mono
	Pixel Size	7 μm × 7 μm
Image	S/N Ratio	40dB
	Dynamic Range	63.3dB
	Image Format	Mono8/Mono10
	ROI	Support
	X Flip	Support
	Gain	1~32
	Exposure Time	4μs~100ms
	Trigger Mode	Software Trigger/Hardware Trigger/Free Run Mode
	TDI Stages	Support 2-TDI, 4-TDI
Performance	User Setting	Support three sets of user-defined configurations
Port	Port	CXP-6
	Lens Mount	M72 × 0.75
Power	Power Supply	DC12-24V power supply via 12-pin Hirose interface
	Power Consumption	24V ≈ 9W
Structure	Product Dimensions	80mm×80mm×57.1mm (Not including rear case connector)
	Net Weight	520g
Environment	Storage Temperature	-30℃~+80℃
	Operating Temperature	-30℃~+50℃