

MV-GX1000

CXP-6 Frame Grabber



GEN*i*CAM

Introduction

MV-GX1000 CXP frame grabber supports CXP-6 protocol. The frame grabber's DIN connectors can be connected to 1 to 8 cameras with different combinations, and each DIN connector can access up to 6.25 Gbps data transfer speed.

Available Model

2 GB memory, 2-channel: MV-GX1002

4 GB memory, 4-channel: MV-GX1004

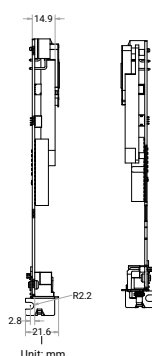
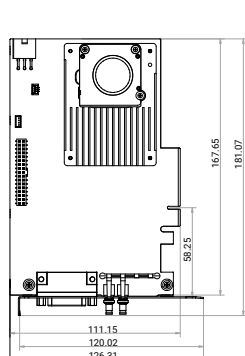
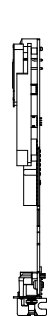
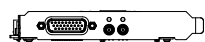
4 GB memory, 8-channel: MV-GX1008

Dimension

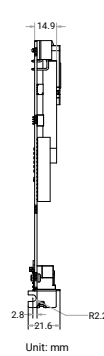
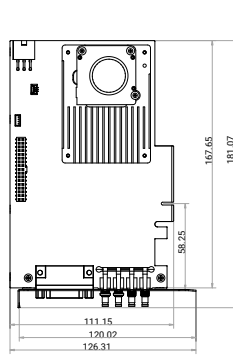
Key Feature

- Supports CXP-6 protocol with each DIN connector accessing up to 6.25 Gbps data transfer speed.
- Supports PoCXP with each channel providing 13 W at most.
- Various indicators indicate frame grabber status in real time.
- Adopts multiple I/O connectors for input and output.
- Provides SDK for secondary development.
- Complies with GenIcam standard.

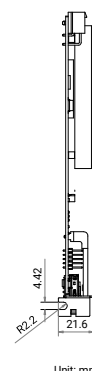
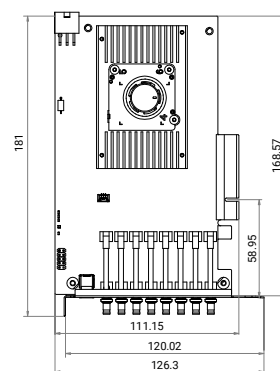
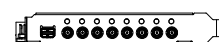
2-Channel



4-Channel



8-Channel



Model	MV-GX1002	MV-GX1004	MV-GX1008
Memory			
On-board memory	2 GB DDR3-RAM	4 GB DDR3-RAM	4 GB DDR4-RAM
Host interface			
Interconnect	PCI-E gen2 × 8		PCI-E gen3 × 8
Delivery bandwidth	3900 MB/s (max. transmission bandwidth); 3350 MB/s (sustained transmission bandwidth)		7800 MB/s (max. transmission bandwidth); 6700 MB/s (sustained transmission bandwidth)
Bus indicator	1		
Camera interface			
Standard	CoaXPress 1.0/1.1		
Interface	DIN 1.0/2.3 × 2	DIN 1.0/2.3 × 4	DIN 1.0/2.3 × 8
Power output	PoCXP, each channel provides 13 W @ 24 VDC at most		
Camera type supported	CXP-6 connector industrial camera		
Camera quantity supported	2 at most	4 at most	8 at most
Camera connection speed	1.25/2.5/3.125/5/6.25 Gbps (CXP-1/2/3/5/6)		
Stream	2	4	8
Stream indicator	2	4	8
Processing feature			
Pixel format	Mono 8/10/12/16; Bayer 8/10/12/16; RGB 8		
GPIO			
I/O Type	Provides 24 I/O connectors, including opto-isolated input × 4 (4.5 VDC to 28 VDC), opto-isolated output × 4 (4.5 VDC to 28 VDC), RX422 input × 4, TX422 output × 4, TTL input × 4, and TTL output × 4		Configurable input/output × 11, compatible with single-ended/differential, supporting cascading of multiple frame grabbers. I/O on bracket: Line 0 to Line 7 supports input and output (3.3 VDC to 24 VDC). I/O on PCB: Line 8 to Line 10 supports input and output (3.3 VDC to 12 VDC)
Connector	HD26 female header		I/O on bracket: Mini-DP, female, 20 pin. I/O on PCB: 9-pin header (2.54 mm interval, 2 × 5, 10-pin hole)
Electrical feature			
Power consumption	Typ. 13.7 W (without PoCXP)	Typ. 14.4 W (without PoCXP)	Typ. 13.1 W (without PoCXP)
Mechanical			
Dimension	181 mm × 126.3 mm × 21.6 mm (7.1" × 5.0" × 0.9")		
Temperature	Working temperature: 0 °C to 55 °C (32 °F to 131 °F) Storage temperature: −20 °C to 70 °C (−4 °F to 158 °F)		
Humidity	10% RH to 95% RH (no condensation)		
General			
Client software	MVS		
Operating system	Windows 7/10/11, Ubuntu16.04 to 20.04 on Linux		
Certification	RoHS, CE, KC		